



**EARTHMOVING
EQUIPMENT**

SYL 956 H1 Front End Loader

We'll move the earth for you



Call any of our branches nationwide on:

011 908 2337

earthmoving@goscor.co.za

www.goscorearthmoving.co.za

A proud member of the Goscor Group of Companies



- Efficient drive system: Rotary automatic gearbox from U.S. DANA enables an increase of travel speed by over 10% and a rise of towing force by over 6%.
- Considerably increased operating efficiency: High-pressure fixed variable confluence hydraulic system enables an increase of operating efficiency by over 12% and a reduction of overall fuel consumption by more than 15%.
- Comfortable steering environment: Panoramic super-large cab with super low noise: 78dB(A); multi-dimensional adjustable suspended seat; multi-directional spatial air conditioner for heating and cooling.
- Easy operating system: Fingertip operation pilot system configured with a variety of functional buttons in the cab.
- Highly reliable key components: DANA gearbox and heavy-duty structural members designed for a service life up to 10 000 hours.
- Stricter standard for safety: Fully-hydraulic service brake, and cab with FOPS and ROPS functions.
- Smart electrical control technique: Intelligent LCD instrument and visualized centralized electrical box.
- Easy access: Easy access to service space and convenient daily inspection openings.



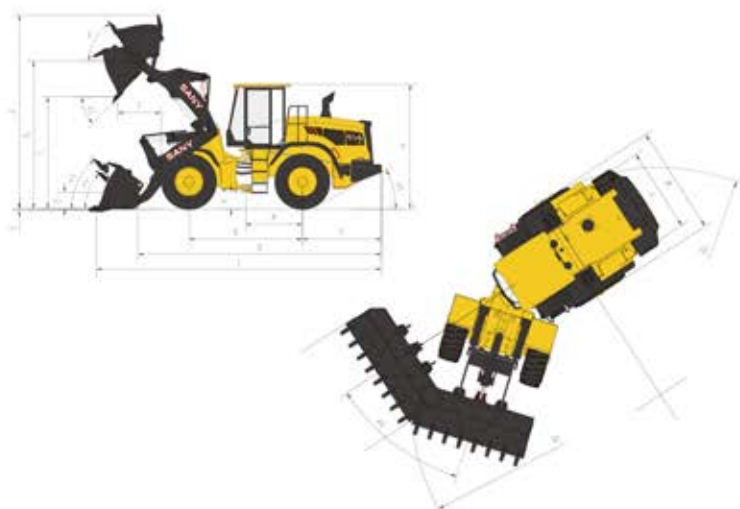
Technical Specifications

Dimensions

Length (Include bucket)	8016±50mm
Width	2825±50mm
Height	3501±50mm
Wheelbase	3200mm
Track width	2200mm
Bucket width	3000mm
Distance between hinge and center of the rear wheel	1600mm
Distance between Counterweight and pin of bucket	6807±50 mm
Distance of the rear suspension	2229±50mm
Minimum ground clearance	432±10 mm

Operating range

The dumping height	3118±50mm
Distance of the dumping	1140±50mm
Maximum lifting height	5410±50mm
Maximum hinge height	4132±50mm
Maximum digging depth	30mm
Dumping angle	45°
Prevent dumping of the bucket (full lift position)	56°
Prevent dumping of the bucket (transport Position)	50°
Prevent dumping of the bucket (ground position)	45°
Departure angle	28°
Maximum steering angle	±40°
Turning radius(Outside of the bucket)	6450±50mm
Minimum turning radius(Outside of the wheel)	5850±50mm



Performance parameter

Bucket capacity	3m³
Operating Weight	17100±200kg
Rated load	5000kg
Engine model	DongFeng CumminsQL8.9-C220-III
Rated power	164/2200 kW/rpm
Max.torque	1000 N.m
Total hydraulic cycle time : Lift & Dump & Lower	10.5s
Maximum digging force	175kN
Maximum traction	167kN
Maximum driving speed	40km/h
Gear I	7.1km/h
Gear II	13km/h
Gear III	25km/h
Gear IV	40km/h
Gear box	DANA TZL16RM
Working Pump	Parker